

Timber Cavity Slider – Ezy Jamb Reveal

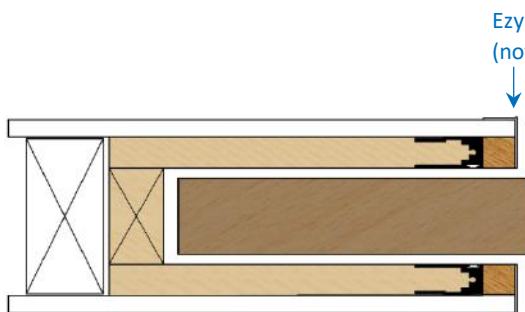
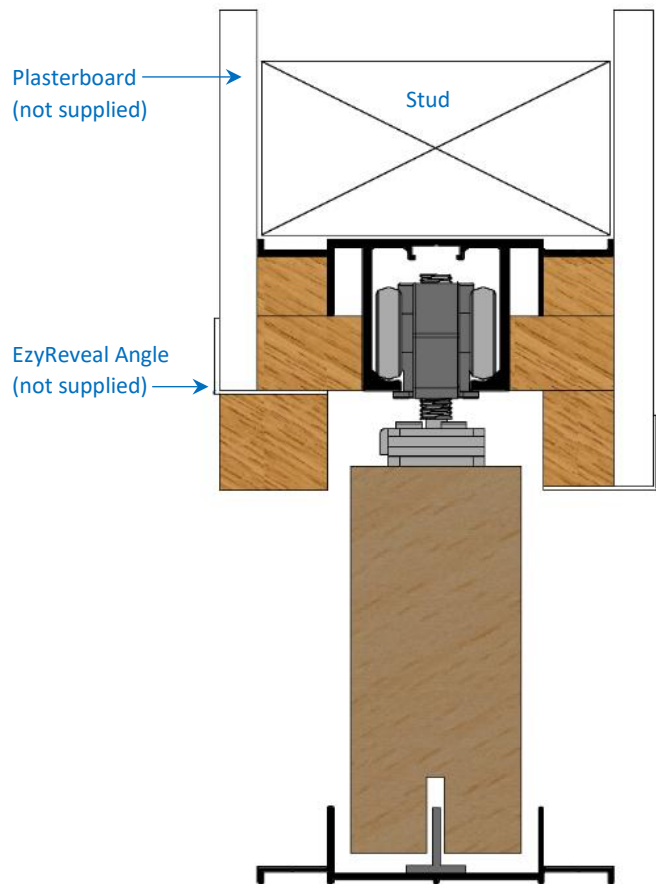
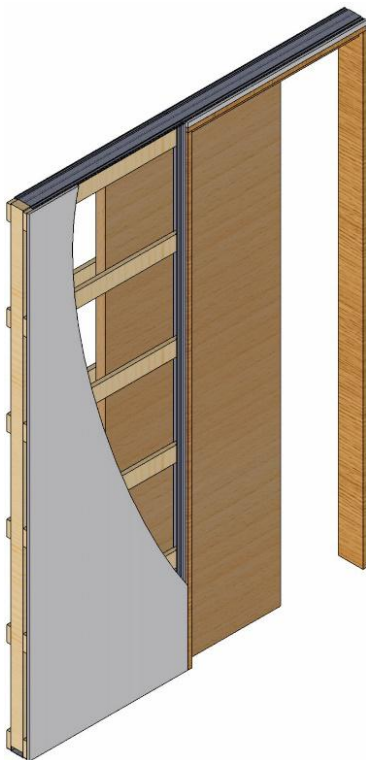
Archskirt Timber Cavity Sliders

The Ezy Jamb reveal timber cavity unit has been designed for use with the EzyJamb Reveal kit by Studco (EzyJamb kit not supplied), to create a modern architectural square set aesthetic with metal trowelable jambs.

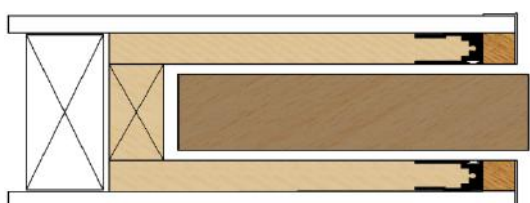
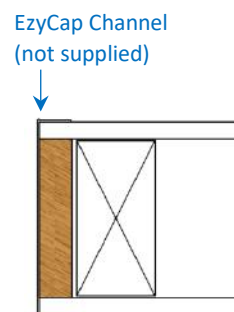
Feature Summary

Max Door Height: 2700mm
 Max Door Width: 1500mm
 Door Thickness: 35mm – 44mm

Stud thickness: 90/92mm, or 120mm
 Plasterboard Options: 10mm, or 13mm
 Optional Extra: Soft Close system
 Optional Extra: Door Ejector



Single Cavity



Bi-parting Cavity

